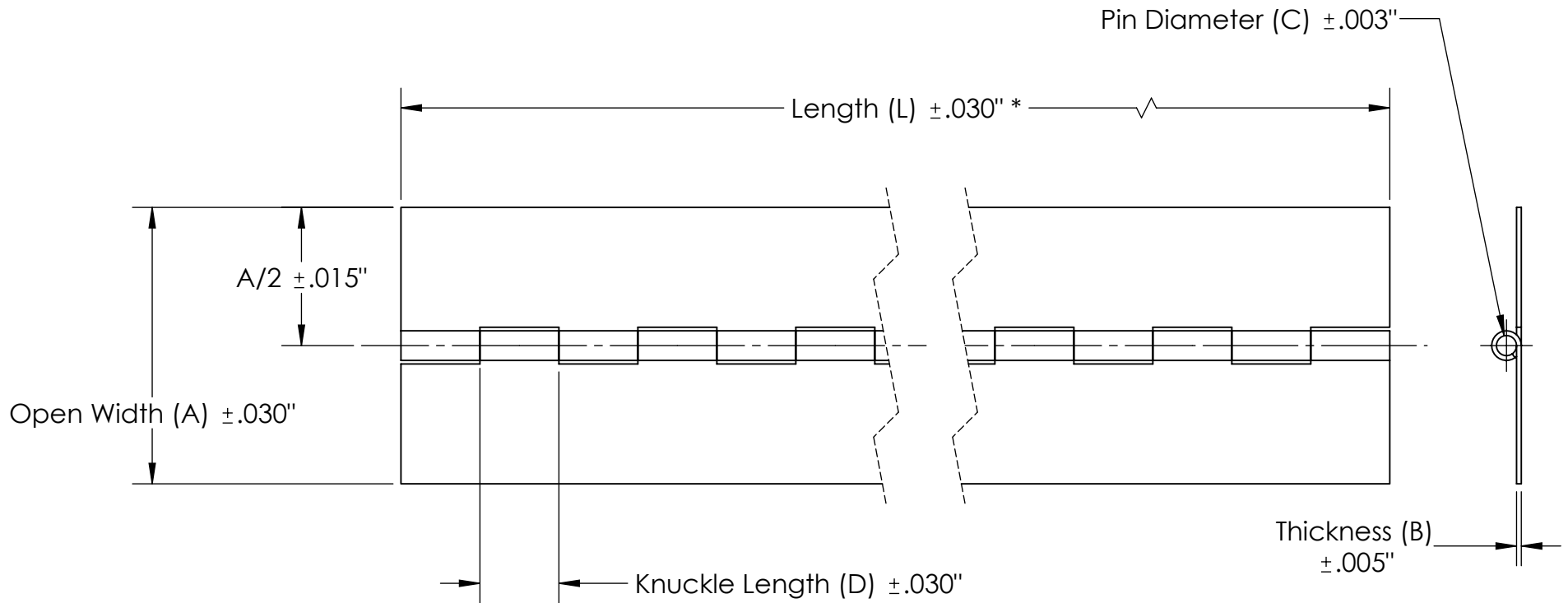
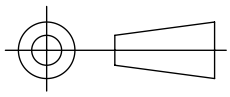


A  
SIZE



**NOTES:**

1. Range of Motion is Approximately  $270^\circ$
2. Hinge Pin is Removable with Force
3. Acceptable Burr  $\pm 10\%$  of material thickness
4. \*Tolerance on length is  $\pm .060''$  for hinges with thickness (B)  $> .090''$

Part No.

Stainless Steel Piano Hinges (Various)

MATERIAL

304 2B Stainless

FINISH

None

Tolerances shown are unless otherwise specified. All tolerances are non-cumulative. All dimensions apply before any finish is applied.



ladeau.com | info@ladeau.com  
ph. 818-240-3990 | fx. 818-240-1219

637 W. Colorado St.,  
Glendale, CA 91204 USA





Part Number	Material	Thickness (B) ( $\pm 0.005$ in/ $\pm 0.127$ mm)		Open Width (A) ( $\pm 0.030$ in/ $\pm 0.762$ mm)		Knuckle Length (D) ( $\pm 0.030$ in/ $\pm 0.762$ mm)		Pin Diameter (C) ( $\pm 0.003$ in/ $\pm 0.076$ mm)		Stock Length (L) ( $\pm 0.030$ in/ $\pm 0.762$ mm)	
<b>C09060037C20-7200</b>	304 2B Stainless Steel, Origin: USA	0.090 in	2.29 mm	6.000 in	152.40 mm	2.000 in	50.80 mm	0.375 in	9.53 mm	72 in	1828.8 mm
<b>C12540031C20-7200</b>	304 2B Stainless Steel, Origin: USA	0.125 in	3.18 mm	4.000 in	101.60 mm	2.000 in	50.80 mm	0.312 in	7.92 mm	72 $\pm 0.060$ in	1828.8 $\pm 1.52$ mm
<b>C12550031C20-7200</b>	304 2B Stainless Steel, Origin: USA	0.125 in	3.18 mm	5.000 in	127.00 mm	2.000 in	50.80 mm	0.312 in	7.92 mm	72 $\pm 0.060$ in	1828.8 $\pm 1.52$ mm
<b>C12540037C20-7200</b>	304 2B Stainless Steel, Origin: USA	0.125 in	3.18 mm	4.000 in	101.60 mm	2.000 in	50.80 mm	0.375 in	9.53 mm	72 $\pm 0.060$ in	1828.8 $\pm 1.52$ mm
<b>C12550037C20-7200</b>	304 2B Stainless Steel, Origin: USA	0.125 in	3.18 mm	5.000 in	127.00 mm	2.000 in	50.80 mm	0.375 in	9.53 mm	72 $\pm 0.060$ in	1828.8 $\pm 1.52$ mm
<b>C12560037C20-7200</b>	304 2B Stainless Steel, Origin: USA	0.125 in	3.18 mm	6.000 in	152.40 mm	2.000 in	50.80 mm	0.375 in	9.53 mm	72 $\pm 0.060$ in	1828.8 $\pm 1.52$ mm